

## Efficiency Tip 15005

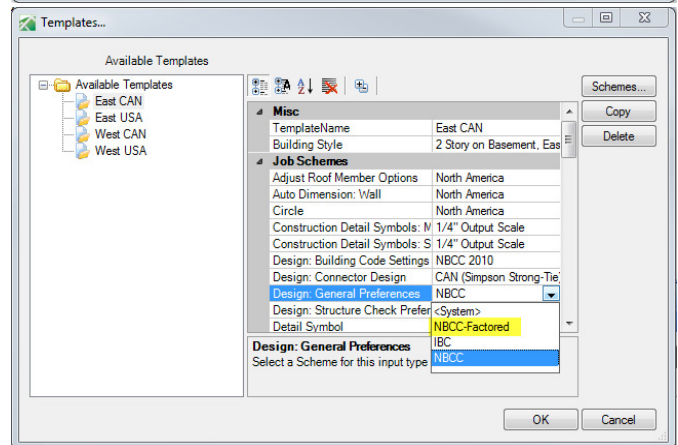
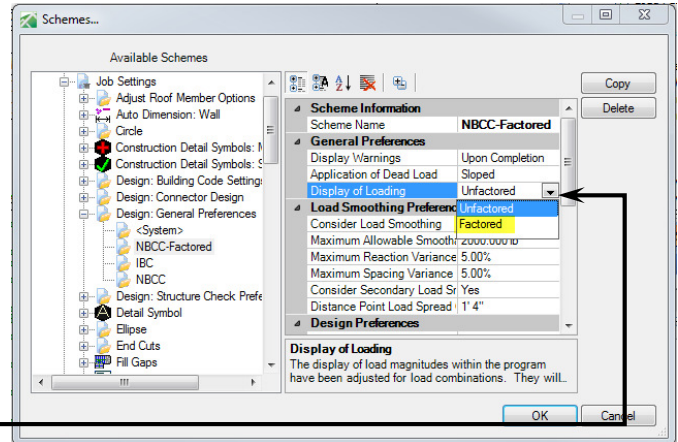
# Factored Reactions

Do you ever need the Factored Reaction from an object to size hardware or other item in a structure? With the release of Javelin **version 5.3** it is now possible to get the Maximum and Critical Factored Reactions calculated by Javelin.

- Quickly get Factored Reaction on:
  - ❖ Member Reports
  - ❖ Load Path Labels (*Transfer Reaction Labels*)
  - ❖ Bearing in the Properties Grid

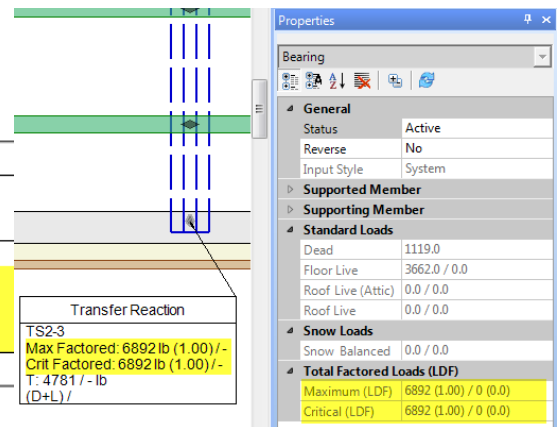
### Update your Settings – Creating your Scheme...

1. Open Javelin select the **Setup** menu and **Schemes...**
2. Expand **Job Settings > Design: General Preferences**.
3. Select a Scheme (*NBCC*), click the copy button and input desired Scheme Name (*NBCC-Factored*) or modify your custom Scheme.
4. Looking for **Display of Loading**. Change the setting from **Unfactored** to **Factored**.
5. Once changes are complete, click **OK** to exit Schemes...
6. Apply your new Scheme to your Templates... Select **Setup** menu and **Templates...**
7. Select the desired Template.
8. Look under **Job Scheme** for **Design: General Preferences**. Select your new Scheme from the list **NBCC-Factored**.
9. Repeat steps 7 and 8 as necessary for other Templates.



**Note:** This will only affect new Job files; if the job is already created, open the job and Edit the Job Properties. Select Job Settings > look for Design: General Preferences and select your newly built scheme NBCC-Factored.

Once the file has been through Load Distribution the loading information is available for Load Path Labels, Bearings and the Member Report (For design results to be show on the member reports full Member Design must be completed).



Supports:				Maximum Loads to Supports		
Support	Start - End	Req'd Br'g	Source	Dead	Floor Live	Roof Live
1	0' : 3"	1.5"	F10(111)	1119 lb	3662 lb	-
2	12' 11" : 13' 2"	1.5"	F8(113)	1157 lb	3693 lb	-

Factored Loads to Supports:				
Support	Max Down / LDF	Crit Down / LDF	Max Up / LDF	Crit Up / LDF
1	6892 / 1.00	6892 / 1.00	-/-	-/-
2	6896 / 1.00	6896 / 1.00	-/-	-/-

Loads:						
Type	Start - End	Combine	Source	Dead	Floor Live	Roof Live

**Note:** Headers in walls do not have bearing like other objects in the system and currently this feature is not available for Headers. If Factored Loads are required, draw the header member in as a beam (Wall/Beam/Wall).

Checkout our YouTube video: <https://www.youtube.com/watch?v=i3jv9JZA7Rc>