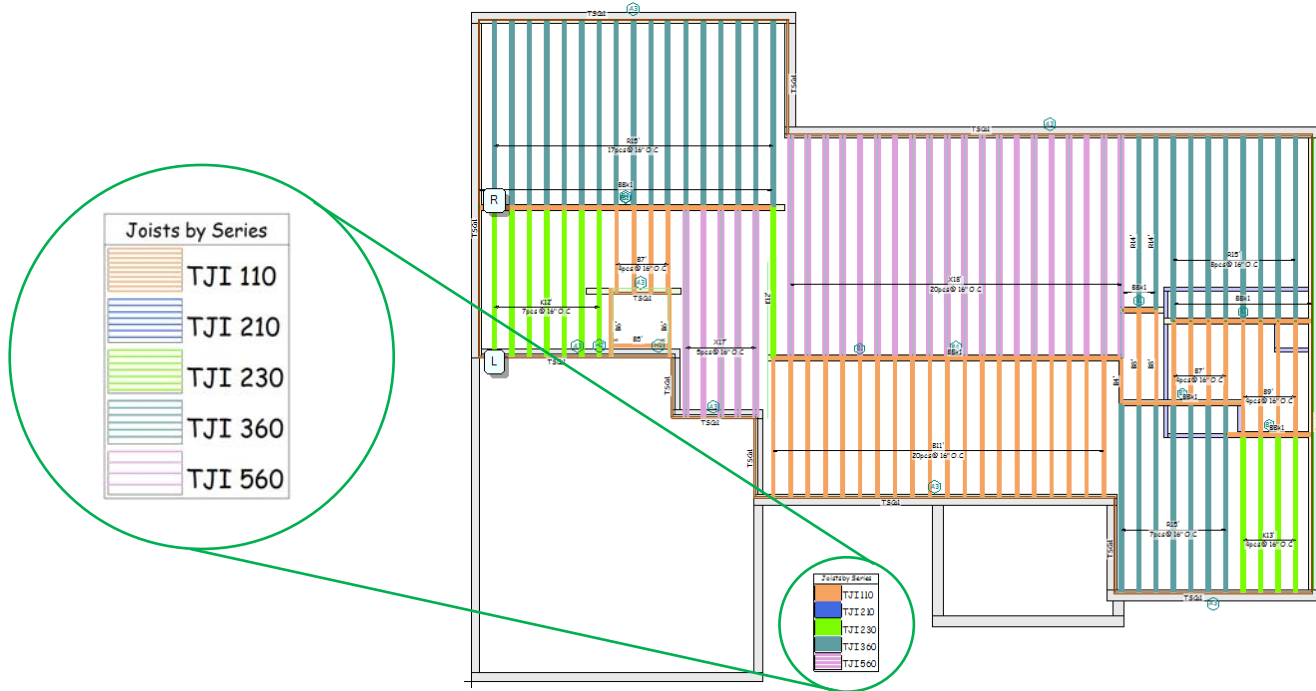


# Using Hatching with Joist Lines or Fill Colours




Use the Hatching feature to identify changes in framing, joist series or depth on a layout.

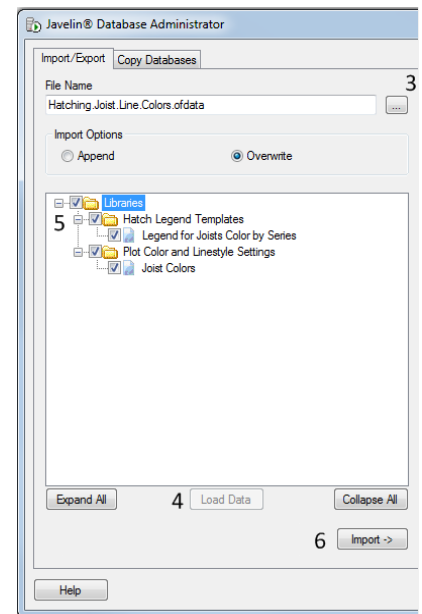


## Benefits

- Improve clarity on the job site for your customers.
- Avoid costly mistakes on the job site.
- Customize to your own preferences.

## Import Settings

1. Download these settings: [Hatching.Joist.Line.Colors.ofdata](#)
2. Open Database Administrator  **Database Administrator**, located under the **Start Menu > All Programs > Modus by Weyerhaeuser > Javelin > Database Administrator**.
3. Once Database Administrator is open; on the left side of the screen click  and browse to the **"Hatching.Joist.Line.Colors.ofdata"** file you downloaded.
4. Click the "Load Data" button; this will populate the tree.
5. Click in the box next to Libraries  **Libraries**; this will add a check all of the items in the tree.
6. Click the **Import** button; this will add the Hatch Legend and Joist Color plot color scheme to your database.



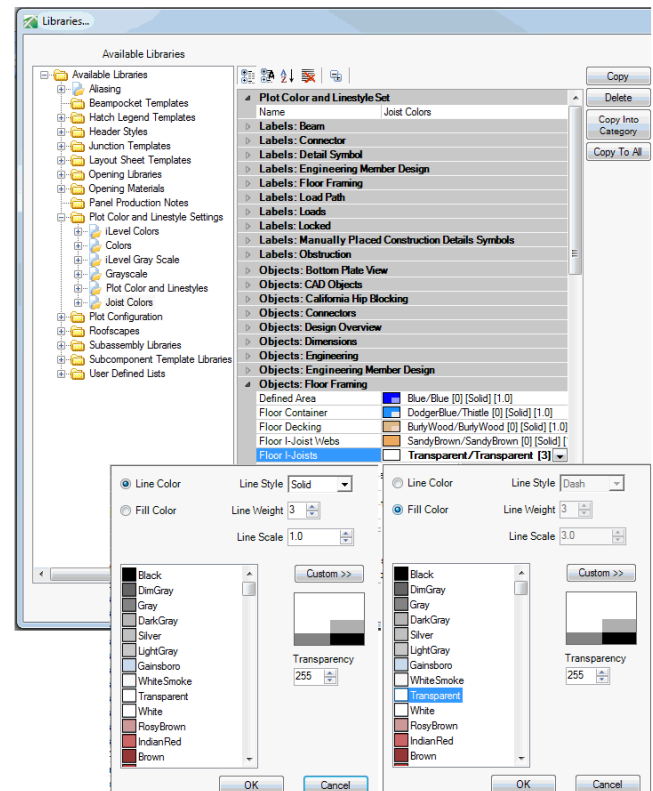
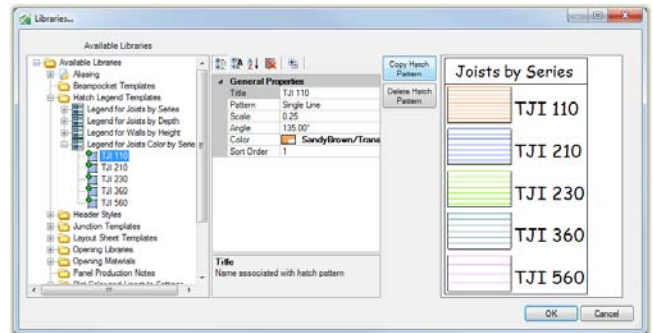
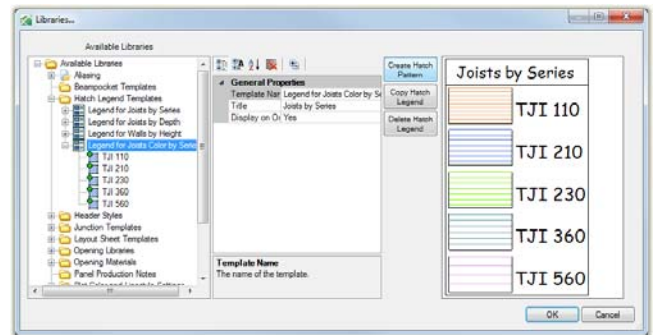
## Efficiency Tip 14011

### Create Settings – Hatch Legend:

- Define a default Hatch Legends > Open Javelin® click on **Setup > Libraries...**
- Expand and highlight **Hatch Legend Templates**.
- Click on **Create Hatch Legend** button.
- In the Template Name type the desired name “**Joist Series**”.
- Click on **Create Hatch Pattern** button.
- In the title type the desired series (ex. “**TJI 110**”).
- Set the Pattern to “**Single Line**”
- Set the Scale from the table below (ex. “**0.29**”).

Hatch Pattern Scale Settings	
Joist Series	Scale
TJI 110	0.29
TJI 210	0.35
TJI 230 / 360 / s31 / s33	0.38
TJI 560 / s47	0.58

- Set the Angle to “**135**” degrees.
- Set Line Colour as desired “**Sandy/Brown**”.
- Set Line Weight as desire “**3**”.
- Set the Fill Colour to “**Transparent**”.
- Specify the Sort Order
- Repeat Steps 11 through 19 for additional joist series.



*Note: If a solid fill colour is desired, set the same colour selection for both step 16 and 18.*





### Create Settings – Plot Colour and Line Styles:

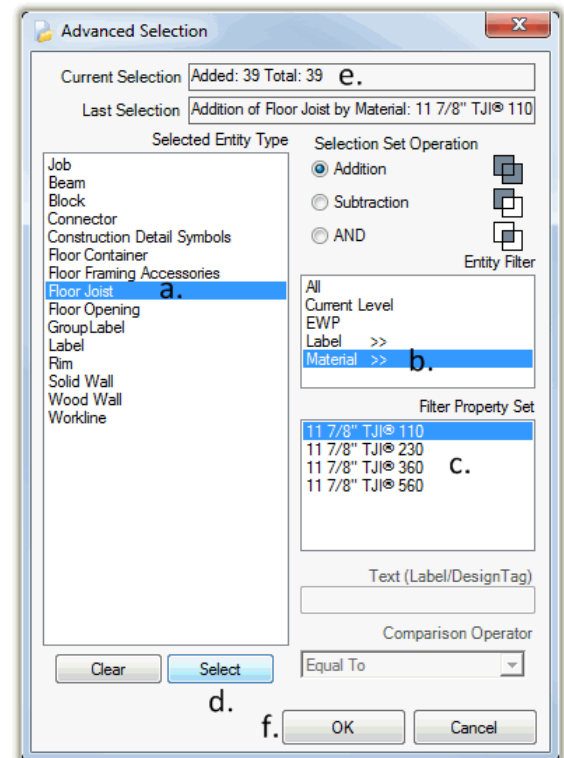
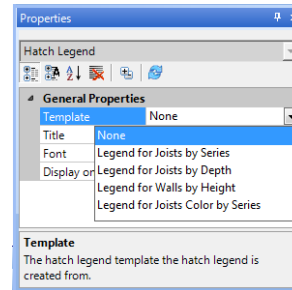
- Libraries... Expand **Plot Color and Linestyle Settings**
- Select and **Copy** your existing scheme you are using.
- In the name field type the desired name **Joist Colours**
- Find **Objects: Floor Framing > Floor I-Joist** : change Colour setting to **Transparent** for both **Line Color** and **Fill Color**
- Find **Objects: Floor Framing Accessories > I-Joist Accessory Flange**: change Colour setting to **Transparent** for both **Line Color** and **Fill Color**
- Click **OK** to exit out of Libraries...

## Efficiency Tip 14011

### Applying settings to a new or existing file...

Once the Javelin Model is complete, add your new Hatch Legend to your drawing.

- From the Text and Annotation tool bar  click on the Create Hatch Legend  command, change the Template in the properties grid to **Legend for Joists Color by Series**, then place it on the drawing in the desired location.
- Quickly apply the Hatch Pattern using **Advance Selection (Ctrl+A)**, to all the Joist Members in the entire model:
  - Select **Floor Joist** from the Entity Type list.
  - Select **MATERIAL >>** from the Entity Filter.
  - Pick the desired material **11 7/8" TJI®110** from the Filter Property Set.
  - Click the **Select** button.
  - Verify at the top of the dialog Current Selection.
  - Click **OK** to get back to the drawing screen.
- Right Click in white space on the drawing to bring up the context menu Select  **Text and Annotation (Alt+N)** then  **Apply Hatch**
- Repeat steps 7 and 8 until all Joist have the desired Pattern



**Warning:** If modifications are made to existing joists (ex. changing Joist spacing with quick edit) to which the hatch pattern has been applied, the pattern may need to be reapplied to the modified members by repeating steps 2 and 3.

### Applying the Plot Colors and Linestyles to the layout sheet

- In the Job Tree expand the Layout Sheets and **Ctrl click** all of the layout sheets.
- In the Properties Grid change Plot Color and Linestyles to **Joist Colors**.

