

Efficiency Tip 14006

Using Job Information Attributes

Add customer and job information to your layouts, material list and member reports.

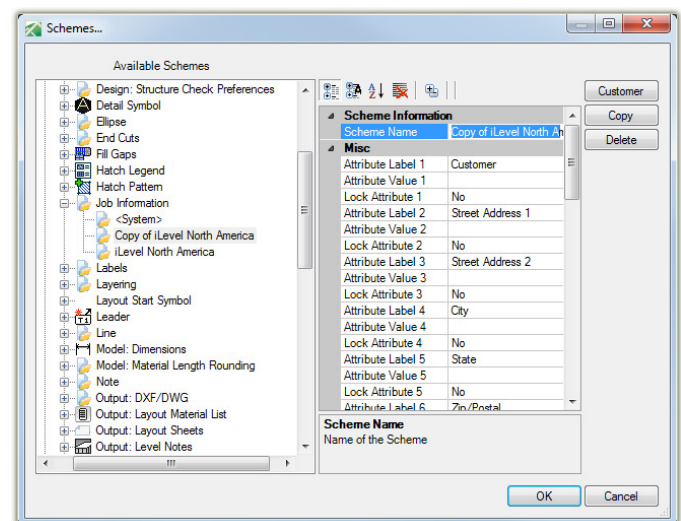
- Display customer or job information on Material Reports header consistently.
- Display supporting design information (X Designer of X Company) in the member report disclaimer.
- Display customer information or job information on Member Reports footer consistently.

What is Job Information: These are data fields that can be Schemed and be used to populate duplicate Customer or Job Information in a title block on a Layout sheets or on Material Lists and Member Reports. These fields can be found in **Schemes...** or **Job Properties >> Job Settings > Job Information**. There are 20 Attribute Labels and Values for a total of 40 fields can be used.

Steps: Creating Scheme...

1. Open Javelin > **Setup > Schemes...**
2. Expand **Job Settings > Job Information**.
3. Select an existing Scheme.
4. Click the **Copy** button and rename as desired to create your own Scheme.
5. Next fill in the each Label and Value with the expected information. Click OK when complete.

Note: A number of the attribute fields are linked to material and member calculation reports, see table below before assigning values.



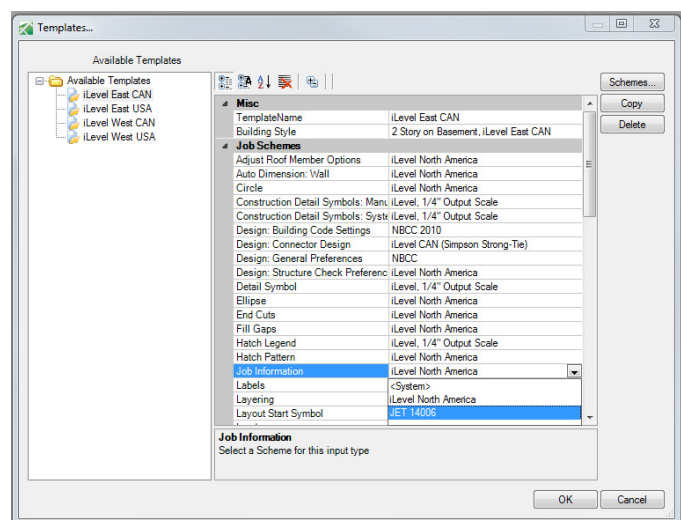
Update your Templates...

6. **Setup > Templates...**
7. Select desired Template from the tree on left side.
8. Set the Job Information to your Scheme you created.

Note: This will only be added to new file.

Re-scheme Existing files: Open Job Properties > select **Job Settings** > select your new scheme name.

Warning: this will clear any existing Job Information.





Efficiency Tip 14006

These Attributes display on Elevation, Material Lists, Member Calculations, Truss Profile and Stacking Production Reports.

Report Name	Attribute Number	Location on Report
Elevation Layout Material List Material Truss Profile Stacking Production†	Label 1, Value 1 Label 2, Value 2 Label 3, Value 3 Label 4, Value 4 Label 5, Value 5	Report Header
Member Report	Value 17 Value 18	Disclaimer
	Value 1 Value 4 Label 19 Value 19 Label 20 Value 20	Report Page Footer

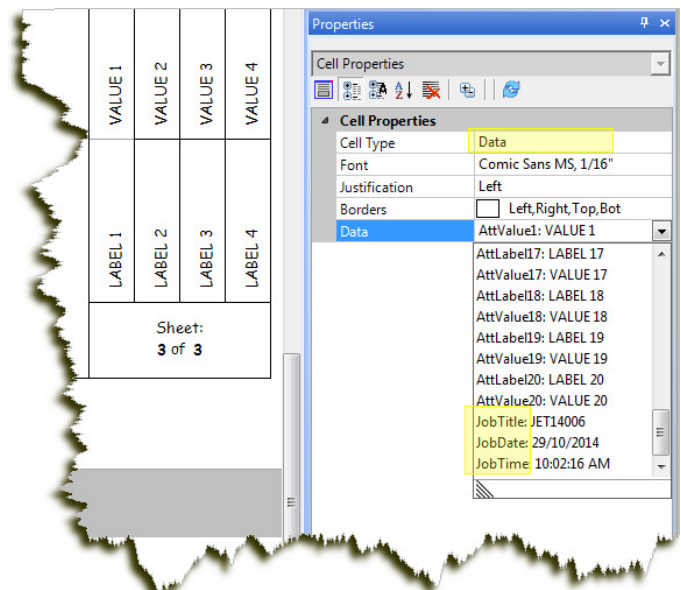
† New report available in Javelin version 5.2.1.324.

Layout Sheets:

Cell Properties of  Info Blocks inserted from the  Text and Annotation tool bar are also able to display this Job Information on layout sheets when the cell type is set to Data.

Note: There are 3 additional data fields that can be selected in an Info Block:

- JobTitle = Job's File Name
- JobDate = Current date
- JobTime = Current time



The screenshot shows a layout sheet with a table containing labels (LABEL 1, LABEL 2, LABEL 3, LABEL 4) and values (VALUE 1, VALUE 2, VALUE 3, VALUE 4). Below the table, it says "Sheet: 3 of 3". To the right, the Properties window is open, showing the Cell Properties for a selected data cell. The properties include:

- Cell Type: Data
- Font: Comic Sans MS, 1/16"
- Justification: Left
- Borders: ☐ Left, Right, Top, Bot
- Data: AttValue1: VALUE 1
- AttLabel17: LABEL 17
- AttValue17: VALUE 17
- AttLabel18: LABEL 18
- AttValue18: VALUE 18
- AttLabel19: LABEL 19
- AttValue19: VALUE 19
- AttLabel20: LABEL 20
- AttValue20: VALUE 20
- JobTitle: JET14006
- JobDate: 29/10/2014
- JobTime: 10:02:16 AM