

Efficiency Tip 14001

Save time with Total Lengths Material List

This could save you and your sales team a lot of time, making quoting / pricing faster and more reliable.

In addition to generating a detailed material list, did you know that Javelin can also add up the total length of each product?

- The system takes care of the math
- Save time and costly math errors
- It can be added to your existing schemes
- Use it for quoting or input into Point of Sale system

To add the Total Lengths Material List to complete job files: Complete your drawing as you normally would with Material Lists.

Steps:

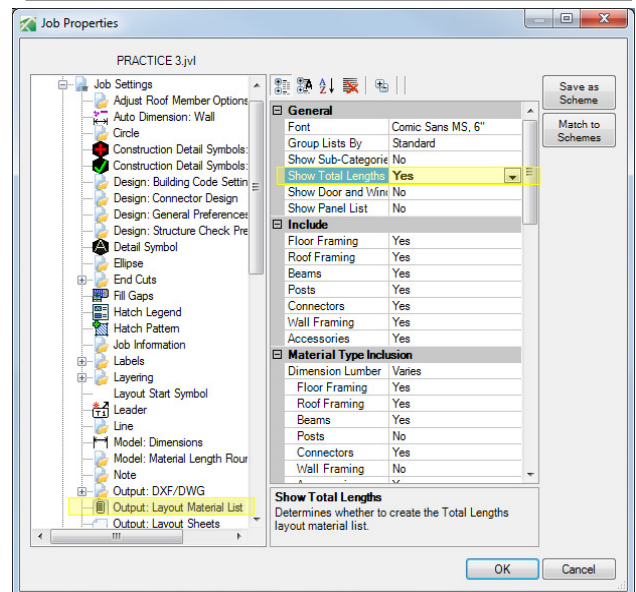
1. In **Plan View** Select > **Edit** > **Job Properties...**
2. Expand **Job Settings** > **Output: Layout Material List** > **General** > **Show Total Lengths = Yes**
3. Click **OK** to close Job Properties, the new Material List will display on your layout automatically.

Setup your **Schemes...** for future jobs

Setup > Schemes... Expand **Job Settings** > **Output: Layout Material List** > select scheme name > **General** > **Show Total Lengths = Yes**.

Note: If you create a new scheme or rename an existing scheme make sure to update your Template for new Javelin files.
Existing file: Open Job Properties > select Job Settings > select your scheme name (if the name has changed).

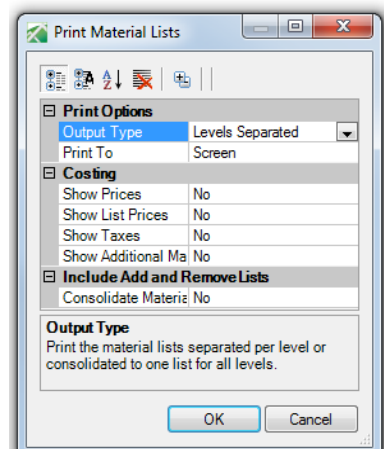
Total Lengths	
Length	Product
875' 0"	14" TJI® 230
348' 0"	14" TJI® 560
38' 0"	1 3/4" x 14" 1.9E Microllam® LVL
20' 0"	1 3/4" x 14" 1.55E TimberStrand® LSL
160' 0"	1 1/4" x 14" 1.3E TimberStrand® LSL
35' 7 1/2"	7/8" x 2 5/16" Web Stiffeners




This Total Lengths Material Lists can also be printed on its own for your sales team to produce system type job quotes or used to input into point of sale system.

1. In **Plan View** Select > **Text and Annotation** > **Print Material List**
2. Select the **Total Lengths Material List** in the plan (highlights green).
3. Right click mouse button when done selecting material lists desired in the report.
4. Select Print To method: **Screen** / **Paper** / **CSV file**.
5. Select desired Costing information for report.
6. Click **OK** to display ----->

Total Lengths	
Length	Product
875' 0"	14" TJI® 230
348' 0"	14" TJI® 560
38' 0"	1 3/4" x 14" 1.9E Microllam® LVL
20' 0"	1 3/4" x 14" 1.55E TimberStrand® LSL
160' 0"	1 1/4" x 14" 1.3E TimberStrand® LSL
35' 7 1/2"	7/8" x 2 5/16" Web Stiffeners



Note: The Total Lengths Material List does not get added to the Grand Total of the report, but has its own Sub Total.



JAVELIN

ESTIMATOR BY WESTCHROUST

Layout Material List Report

Customer:

Street Address 1

Street Address 2

City

State

Job: PRACTICE 3

Level: 1st Floor

Total Lengths

Length	Product	List Price	Price
875'0"	14" TJI® 230	\$1.46	\$1277.50
348'0"	14" TJI® 560	\$2.28	\$793.44
38'0"	1 3/4" x 14" 1.9E Microllam® LVL	\$3.68	\$139.84
20'0"	1 3/4" x 14" 1.55E TimberStrand® LSL	\$3.17	\$63.40
160'0"	1 1/4" x 14" 1.3E TimberStrand® LSL	\$2.04	\$326.40
35'7.8	7/8" x 2 5/16" Web Stiffeners	\$0.00	\$0.00
Sub Total:		\$2,600.58	
Sub Total:		\$0.00	
Total:		\$0.00	