

Efficiency Tip 13005

Customize the Javelin Interface

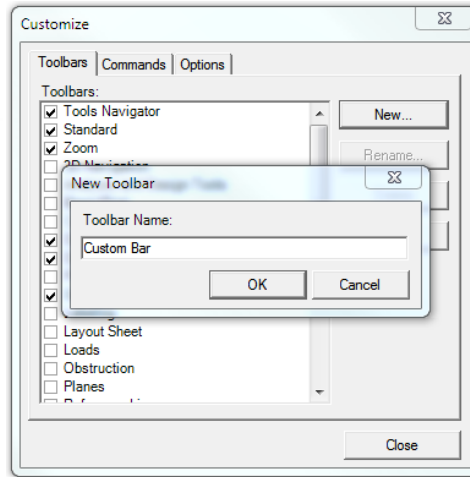
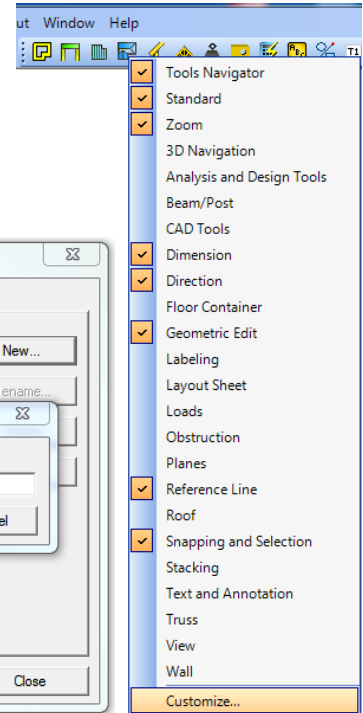
The Javelin Interface can be setup however you want it to work. Customizing your tool bars can save clicks into sub tool bars. To create a custom tool bar with the commands you use most often.

Steps:

1. Right click over any existing tool bar, Select Customize... from the list of tool bars.
2. Click New... and type the Name of your New Tool Bar.
3. Now click on the Commands tab select from the Categories list Wall > Input Wall and drag it to the new Custom Bar.
4. Repeat step 3 until all of the desired commands are in the tool bar.

Suggested List:

1. Wall > Input Wall
2. Wall > Break At Location
3. Beam/Post > Input Beam
4. Beam/Post > Input Post
5. Floor Container > Input Floor Container
6. Floor Container > AutoFrame Floor Container
7. Floor Container > Cut Member
8. Floor Container > Quick Edit
9. Floor Container > Manually Input Accessories...
10. Loads > Create Line Load
11. Planes > Input Plane
12. Planes > View Cut
13. Beam/Post > Roofline Beam
14. Beam/Post > Standard Roof Beam
15. Roof > Input Roof Joist
16. Roof > Input Ceiling Joist
17. Roof > Manually Input Roof Blocking
18. Analysis and Design > Design Members
19. Analysis and Design > Design Mechanical Connectors
20. Analysis and Design > Display Member Report
21. Dimension > Auto Dimension
22. Text and Annotation > Level Notes
23. Text and Annotation > Input Layout Symbol
24. Text and Annotation > Input Drawing Note
25. Text and Annotation > Create Material Lists
26. Text and Annotation > Detail Symbol
27. Labeling > Create/Refresh Load Path Labels
28. Labeling > Generate Group Labels
29. Labeling > Avoid Label Collisions



TIP: Create your tool bar in the order you draw object and do tasks. This will serve as reminder what to do next when you are working on a file.