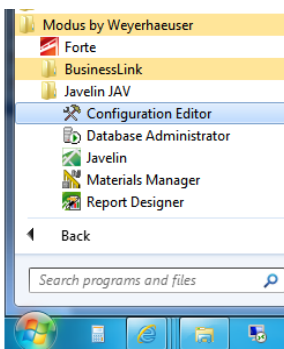


# Default Job File Location

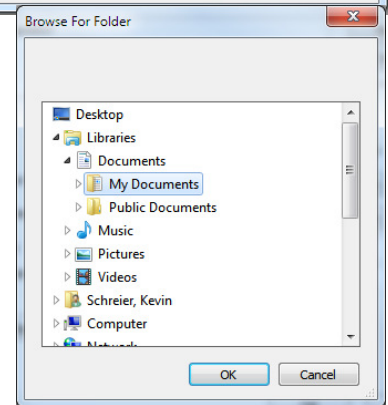
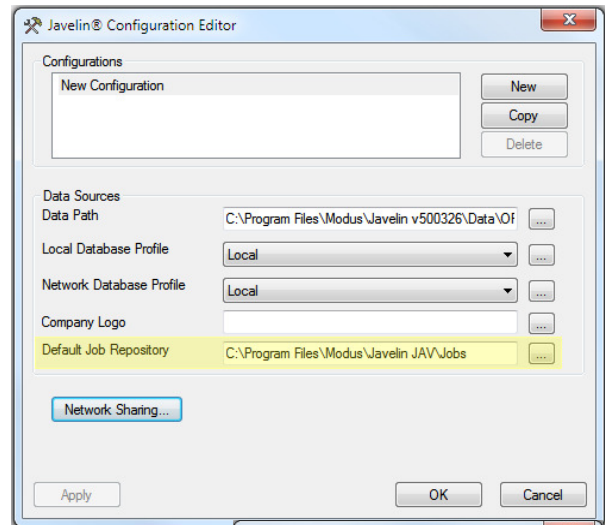
Are you tired of changing folder locations every time you open a Javelin file? Use the Configuration Editor to set Javelin's default folder opening location.


**Steps:**

1. The Javelin Configuration Editor can be found in the Start menu > All Programs > **Modus by Weyerhaeuser** > Javelin JAV (instance name) > Configuration Editor



*Note: This location will not be the same with older installs of Javelin. (iLevel)*



2. Change the Default Job Repository by clicking  button at the end of the line. This will allow you to browse to the location on a network drive or even just a different location on the hard drive. Click OK

# Company Logo

Want to personalize your Member Report and Material List? Use the same steps above to add your logo.

